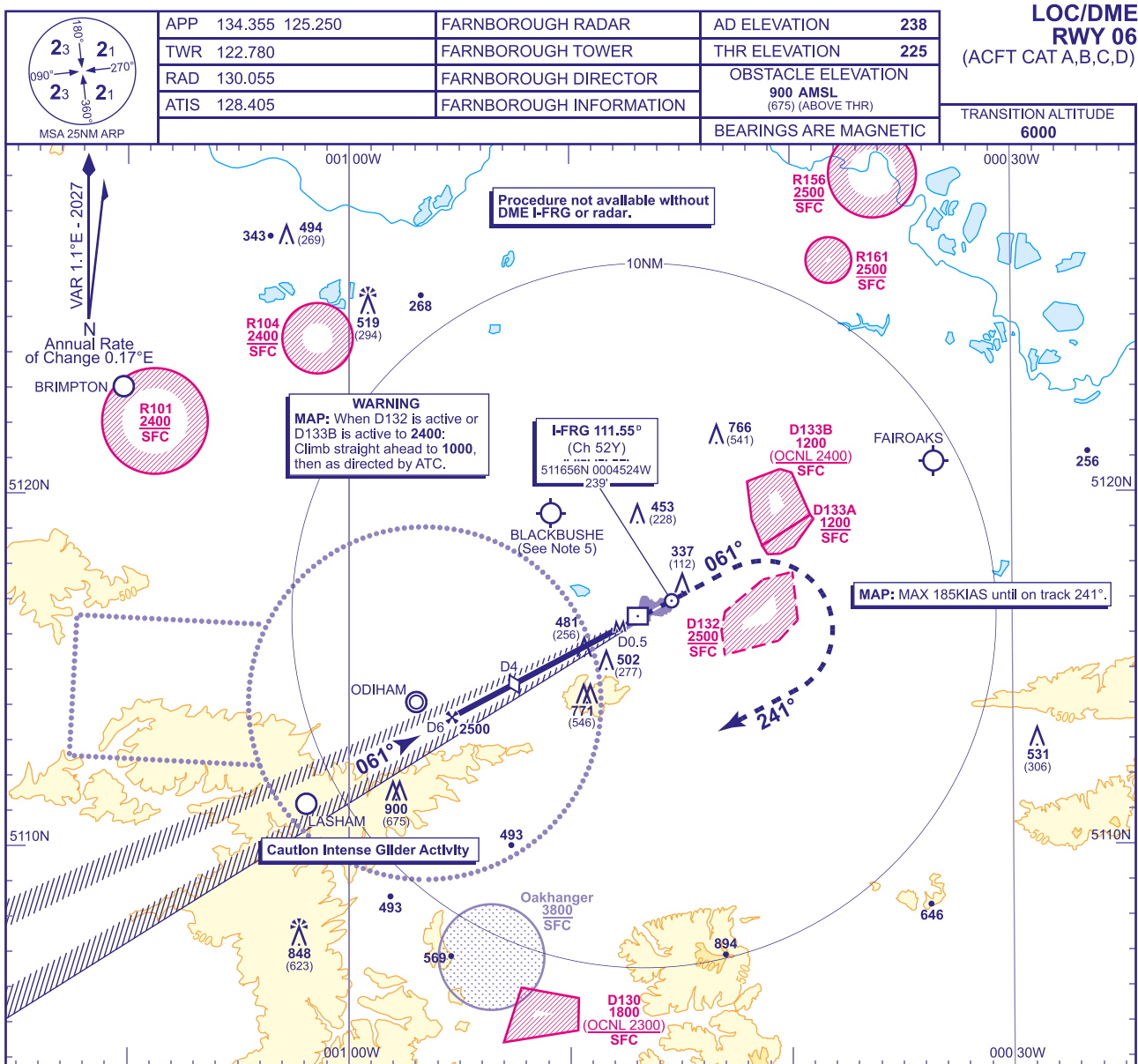
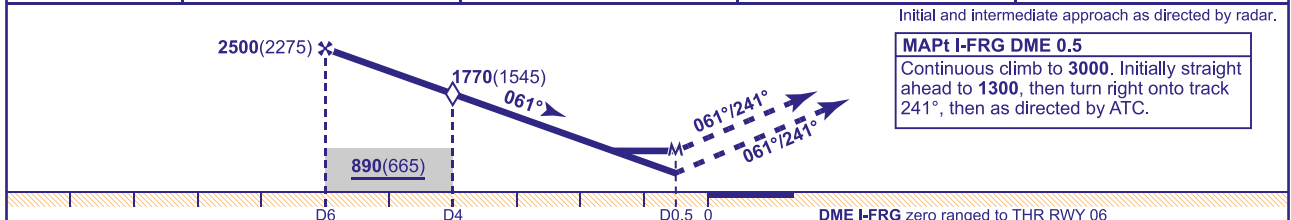


INSTRUMENT APPROACH CHART - ICAO

**FARNBOROUGH
LOC/DME
RWY 06**
(ACFT CAT A,B,C,D)



RECOMMENDED PROFILE Gradient 6.1%, 372FT/NM				
DME I-FRG	5	4 (SDF)	3	2
ALT(HGT)	2140(1915)	1770(1545)	1400(1175)	1020(795)



Aircraft Category		A	B	C	D	Rate of descent	G/S KT	160	140	120	100	80
OCA (OCH)	2.5% Climb Gradient	890(665)	890(665)	890(665)	890(665)		FT/MIN	990	870	740	620	500
	5% Climb Gradient	750(525)	750(525)	750(525)	750(525)							
VM(C)OCA (OCH AAL)	South of RWY 06/24	880(642)	1020(782)	1170(932)	1170(932)							

NOTE	<p>1 No turns before MAPt.</p> <p>2 MSA are based on obstacle/terrain clearance. Pilots are to ensure safe navigation to remain clear of active Danger Areas.</p> <p>3 SUA/IS available on Farnborough Radar 133.440 when open; other times London Information on 124.600.</p> <p>4 CAT B,C and D no circling when EGD132 is active. CAT C and D no circling when EGD133A and EGD133B are active.</p> <p>5 Pilots are reminded of the close proximity of Blackbushe aerodrome, 3.8NM north west of Farnborough and to remain clear due to intense GA activity.</p> <p>6 See Loss of Communication Procedures in EGLF AD 2.22 Flight Procedures.</p>	
-------------	---	--

CHANGE (1/26): MAG INFO REVISED. MAG HEADINGS. RESTRICTED AREA EGR161 ADDED.